

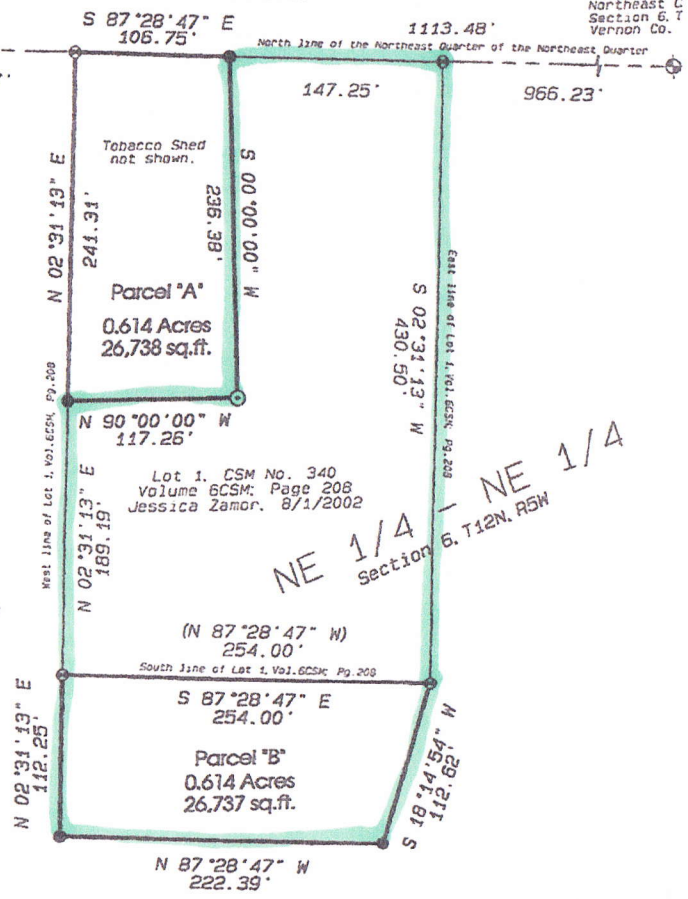
North 1/4 Corner
Section 6, T12N, R5W
Vernon Co. Mo. Fd.

2615.00'

Northeast C
Section 6, T
Vernon Co.



Basis of Bearings:
The North line of the NE 1/4
assumed: N 87°28'47" W



NE 1/4 - NE 1/4
Section 6, T12N, R5W

2.51 Acres

SOUTH PART JEFFERSON

T.12N.-R.5W.

